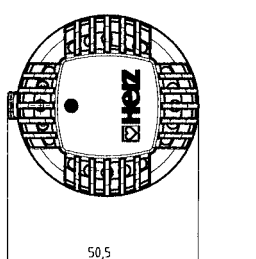
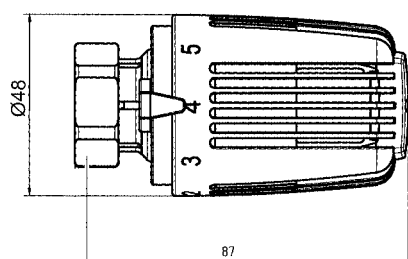


7230



7260

### HERZ-thermostatic head

7230

7260



EN 215

**1 7230 06 Radiator thermostat with hydrosensor (liquid filled)**  
With "0" position, adjustable frost protection, limitation and locking of set value range. White hand wheel.

### Models

**7230**

**1 7260 06 Radiator thermostat with hydrosensor (liquid filled)**  
With automatic frost protection and limitation and locking of set value range. White hand wheel.

**7260**

Set value range **7230:** 0-28°C

**7260:** 6-28°C

Frost protection 6°C

The HERZ-thermostat is maintenance-free.

### Operational data

Can be combined with any HERZ-valve suitable for thermostatic operation.

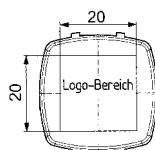
Further information on article numbers, dimensions and delivery type can be found in the appropriate data sheets.

### Application

The HERZ-thermostat serves as probe and control element. The valve spindle is moved when the volume of the liquid filling of the HERZ-hydrosensor changes.

### Operation

Attachable logo clip



### Logo clip

On request, we can deliver the logo clip including your company's logo.

We reserve the right to make modifications in line with advances in engineering.

By adjusting the scale marking to the indicator the following approximate temperatures can be reached in the room, allowing temperature (K) deviations according to the installation and system type.

Marking	*	1	2	3	4	5	6
°C	6	9,5	13	16,5	20	23,5	28

### Setting options

7230/7260

The "4" comfort setting corresponds to a room temperature of approximately 20°C and offers optimum comfort and energy saving.

### Comfort setting "4"

Set to "\*" position the valve opens at an ambient temperature of approximately 6°C and prevents the system from freezing.

### Frost protection "\*"

Set to position "0", the thermostatic valve is shut off and the frost protection is overridden.

### Shutoff Thermostat 7230

When the heating period ends, open the thermostat by turning anti-clockwise. This prevents dirt adhering on the valve seat.

### Summer setting

For theft protection, snap clips 1 9552 03 can be ordered, which can be fastened over the union nut.

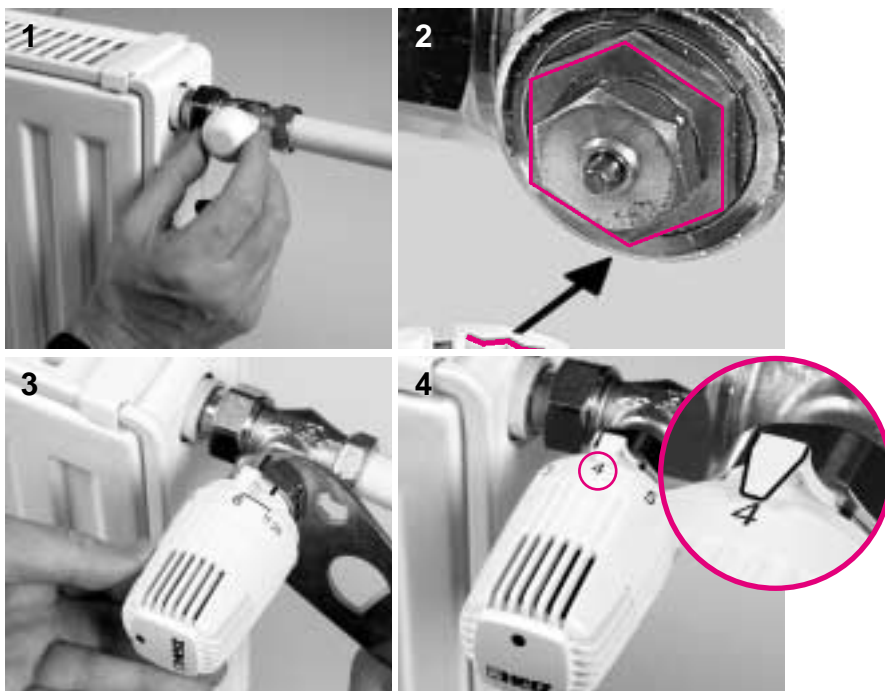
### Theft protection

- 1 6640 00 HERZ-universal key to open theft protection
- 1 6807 90 HERZ-TS-90 assembly key
- 1 9551 00 stop pins for limitation and locking of the set value range
- 1 9552 03 theft protection (snap clips), open with key 1 6640 00
- 1 7000 00 Logo clip, unmarked

### Accessories

1. Unscrew the screw cap or hand wheel from the valve.
2. Set the thermostatic head to the "fully open" position (preset) and place it on the lower part of the valve until the lower part locks and the indicator is completely visible.
3. Do up the union nut and tighten gently (key 30 hex).
4. Turn the hand wheel to check operation.

### Installation

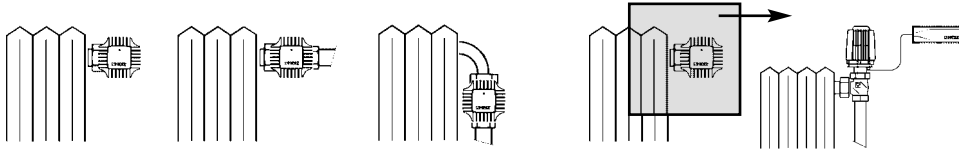


The HERZ-thermostatic head should not be subjected to direct sunlight or heat radiating devices (e.g. TV). If the radiator is covered by panelling or heavy curtains, heat will accumulate and the thermostat is therefore unable to sense and adjust the room temperature. In this case use the HERZ-thermostat with remote sensor or remote setting.

## Assembly instructions

- 7330** HERZ-thermostat with remote adjustment
- 7430** HERZ-thermostat with remote sensor and "0" position
- 7460** HERZ-thermostat with remote sensor and automatic frost protection

The appropriate standard sheets provide further technical information about these three products.



## Hidden limitation or locking

To prevent unauthorized limitation or locking of the turning range, install one or two plug-in type stop pins.

The stop pins can be ordered as accessories, article number 1 **9551** 00 - 1 set.

### Procedure

The lower part of the thermostatic head has a base part with circular holes to house the stop pins.

- Set the thermostatic head to the required limiting, or locking position.
- Between the hand wheel scale positions "6" and "T" is a line that shows the marking for setting the stop pins. It is advisable to follow the same procedure as for "limitation".
- Set hand wheel to required set value (picture 1)
- Upward limitation  
Place pin in alignment to the left-hand end of the line. (picture 2)
- Downward limitation  
Place pin in alignment to the right end of the line. (picture 3)
- Locking  
Place a pin at the left and right ends of the line. (picture 4)
- Plug in the stop pins until the stop (thick end). They can be removed with an appropriate tool (pliers etc).



Picture 1



Picture 2



Picture 3



Picture 4